

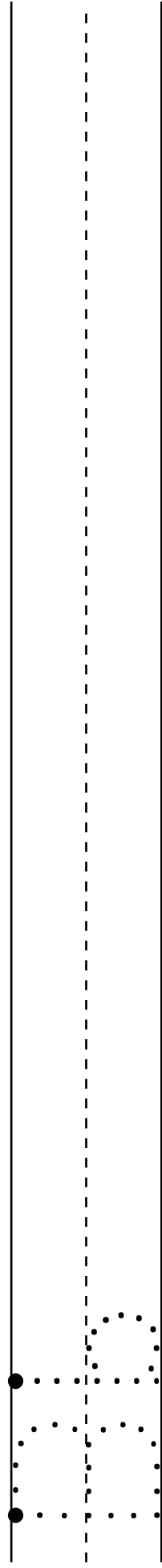
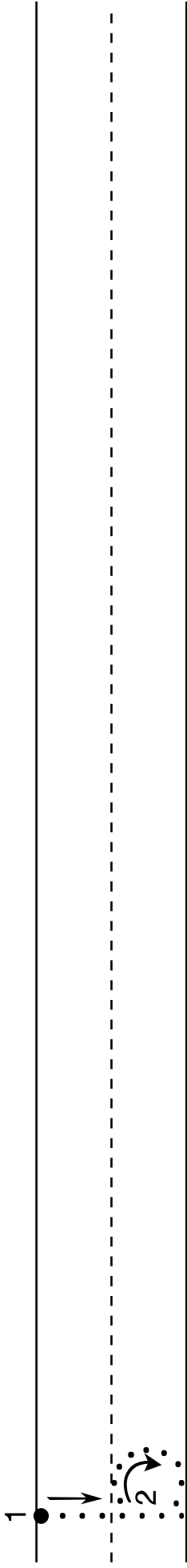
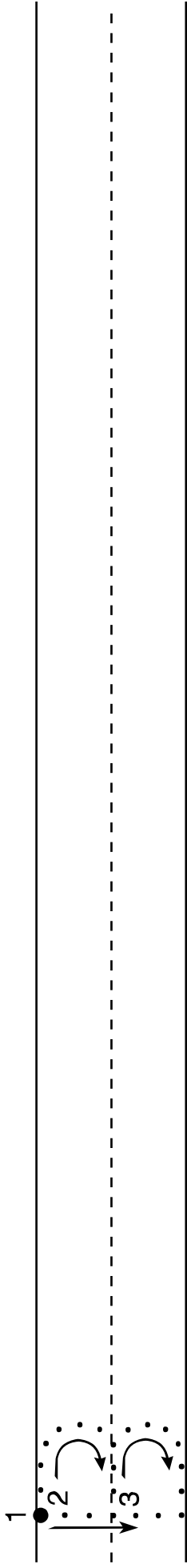
## Handwriting Practice

These handwriting practice sheets are coordinated with the scope and sequence for initial sound picture sorts in word study.

To use them, first teach the strokes during your word study routines. Then have students practice (either independently or with a paraprofessional partner). Students should make as many examples as they can on each line, and then look back and circle their best work.

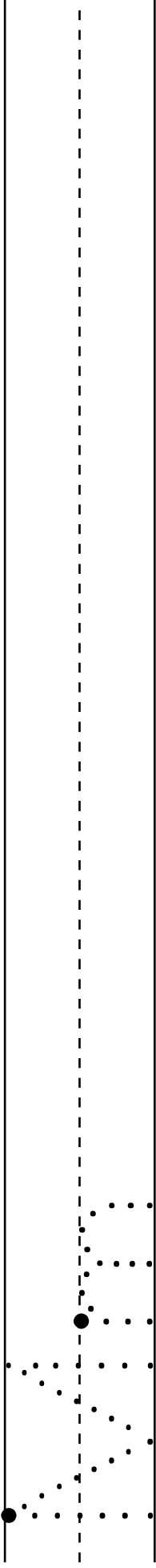
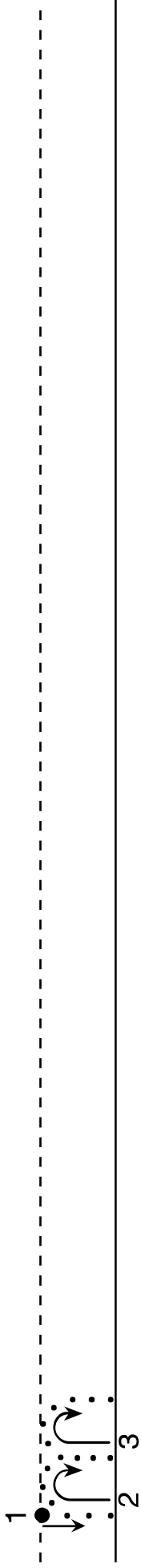
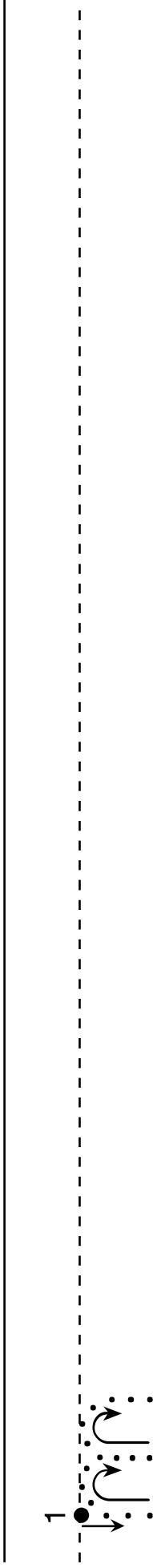
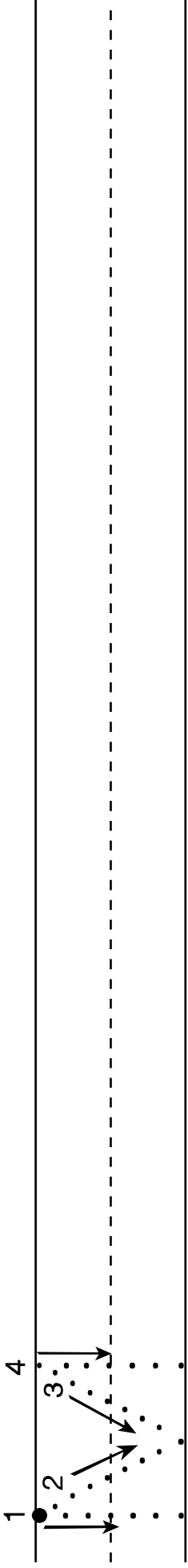
Student Name: \_\_\_\_\_

# K Week 5



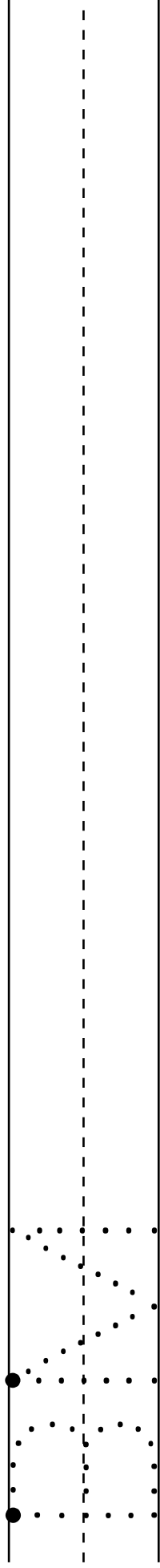
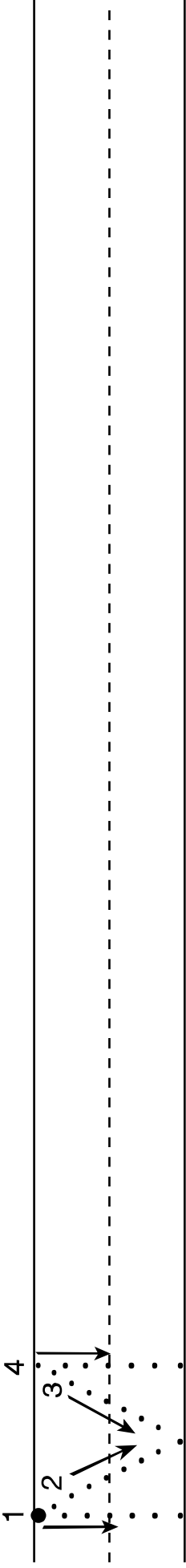
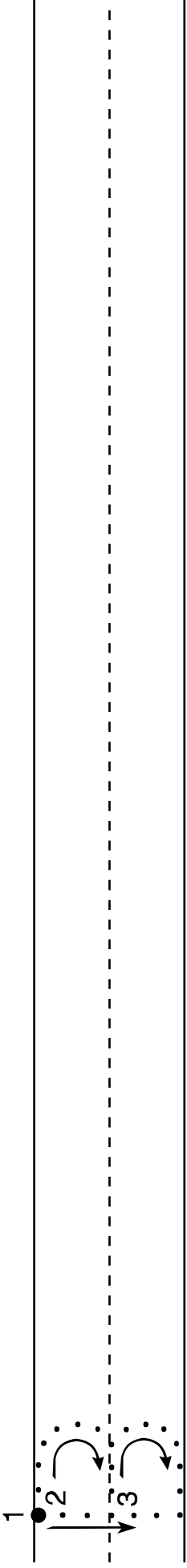
Student Name: \_\_\_\_\_

# K Week 5



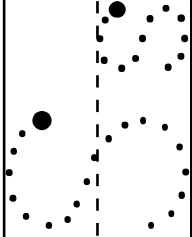
Student Name: \_\_\_\_\_

# K Week 5



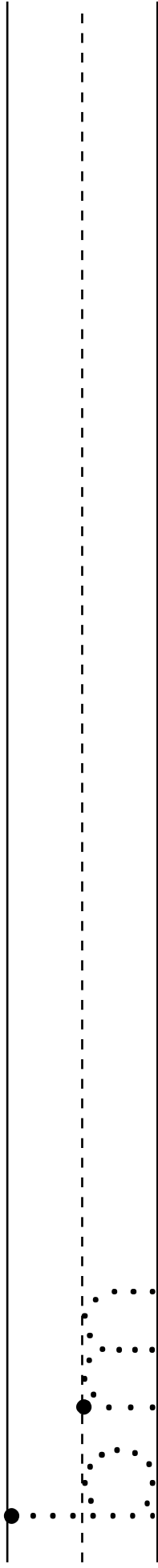
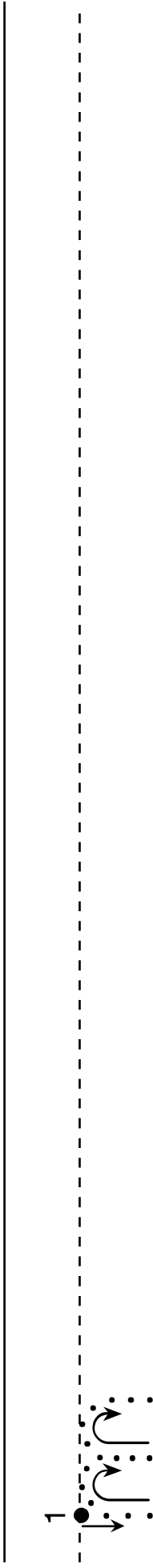
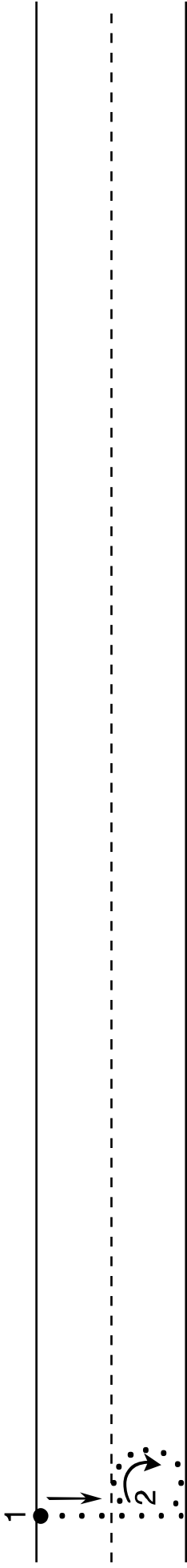
Student Name: \_\_\_\_\_

# K Week 6



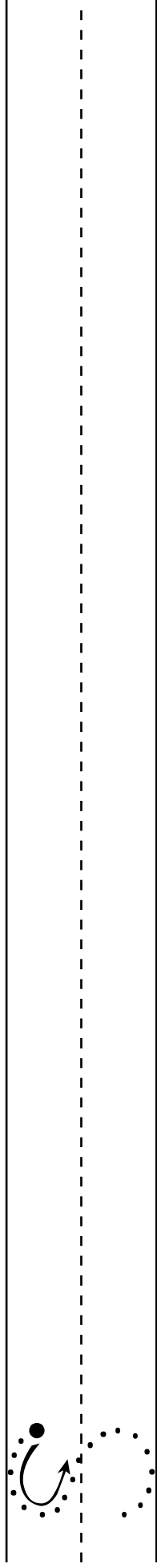
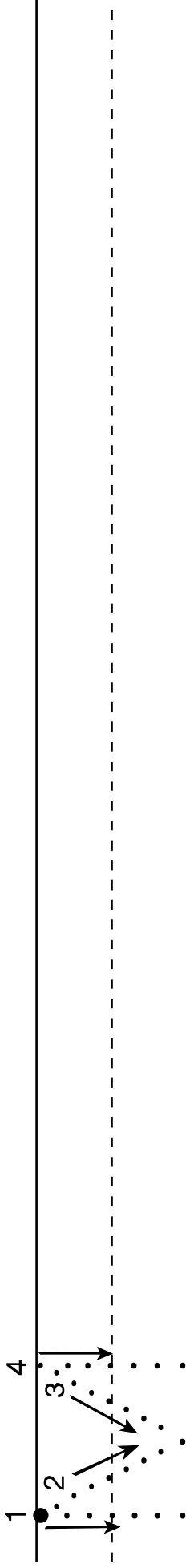
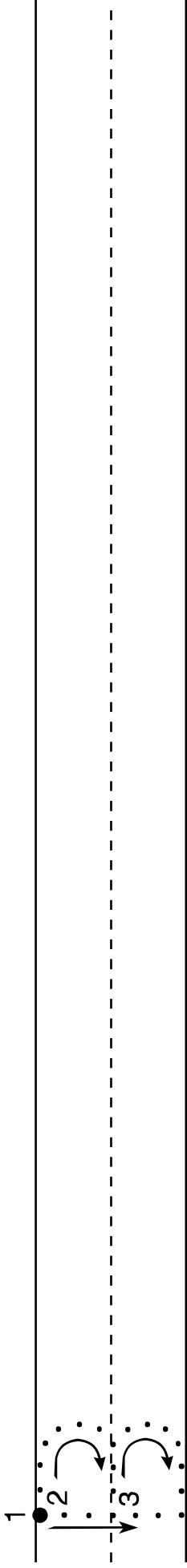
Student Name: \_\_\_\_\_

# K Week 5



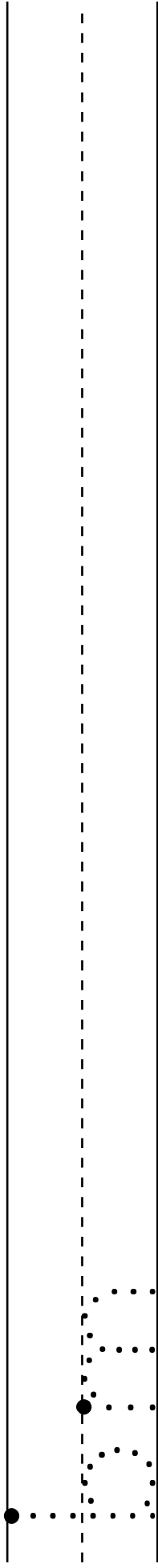
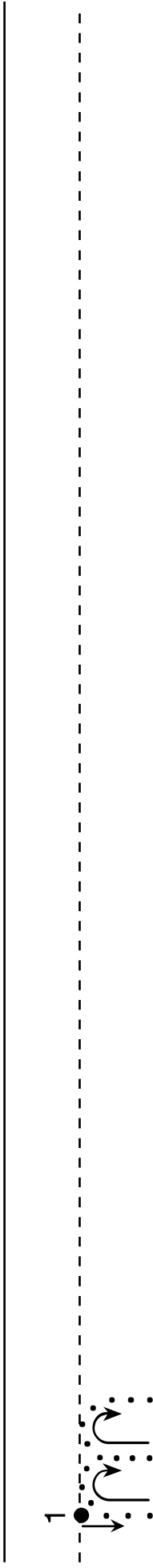
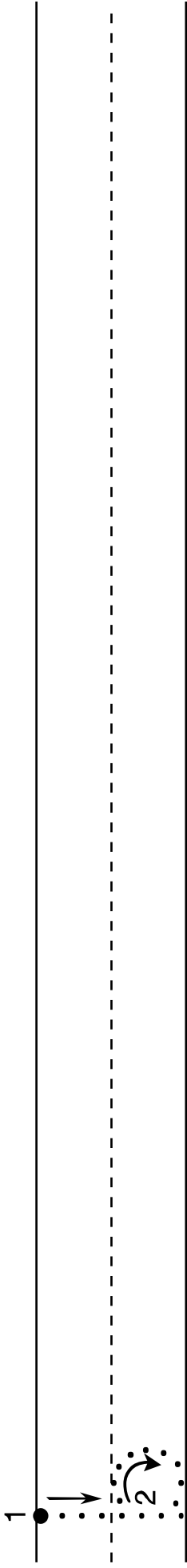
Student Name: \_\_\_\_\_

# K Week 6



Student Name: \_\_\_\_\_

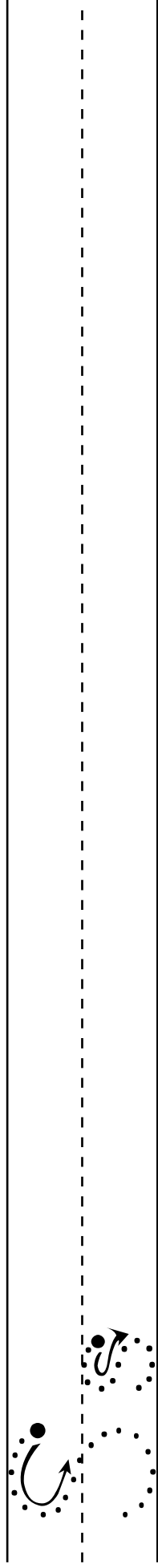
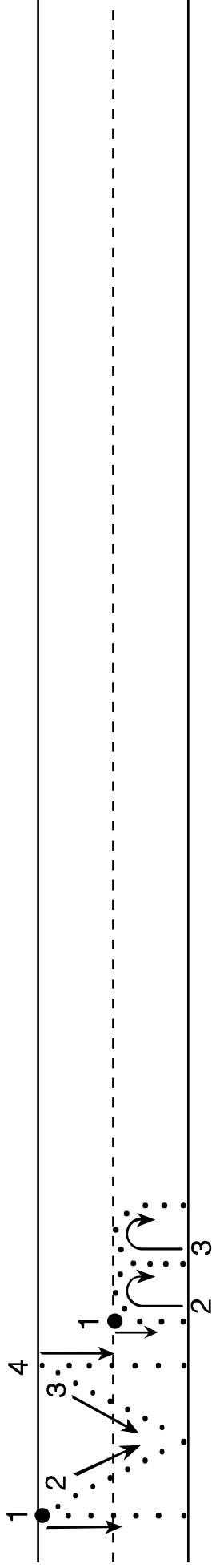
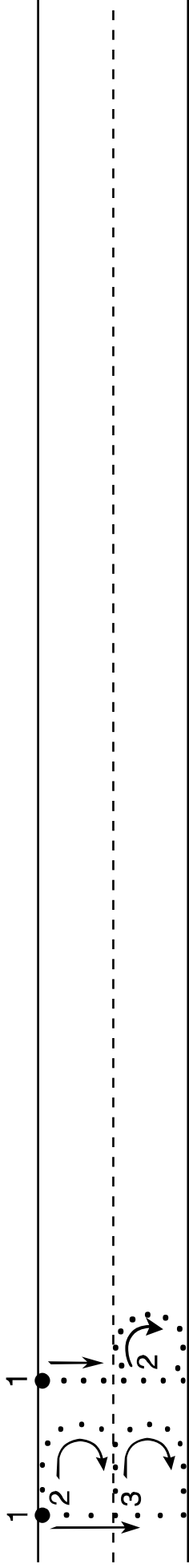
# K Week 5





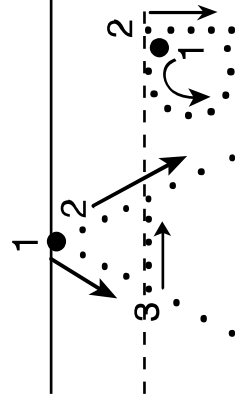
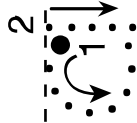
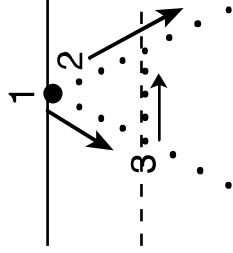
Student Name: \_\_\_\_\_

# K Week 6



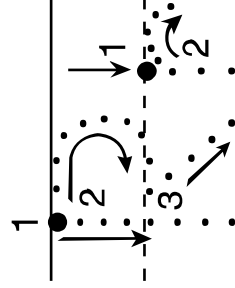
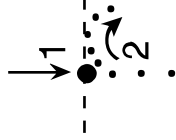
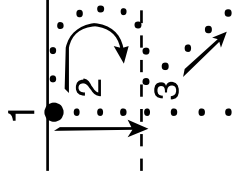
Student Name: \_\_\_\_\_

# K Week 7



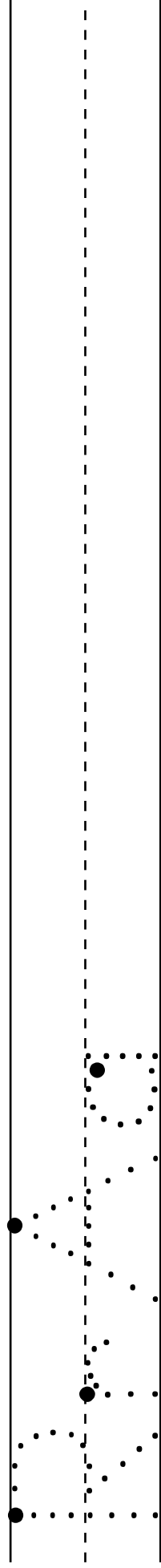
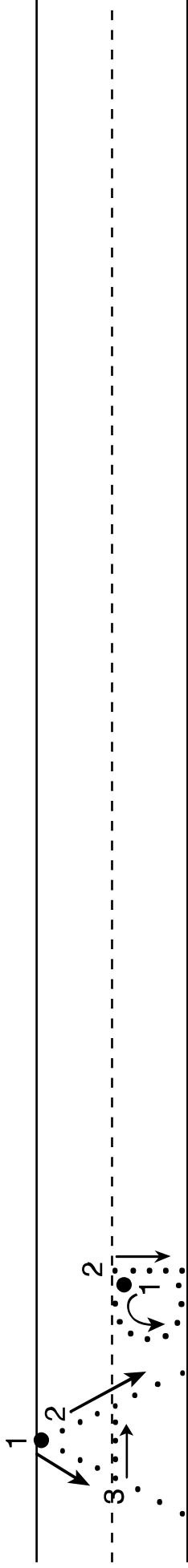
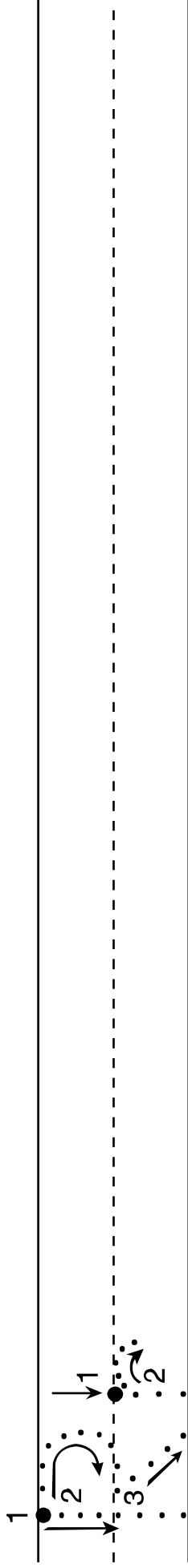
Student Name: \_\_\_\_\_

# K Week 7



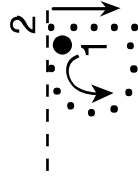
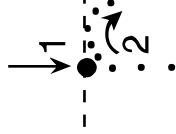
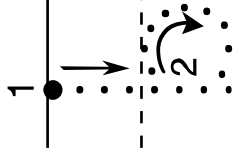
Student Name: \_\_\_\_\_

# K Week 7



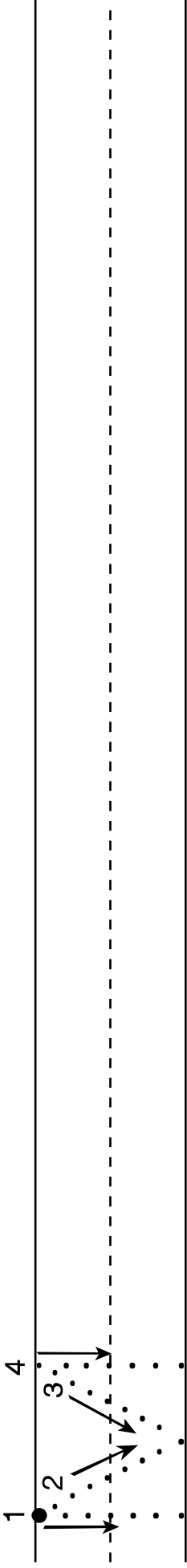
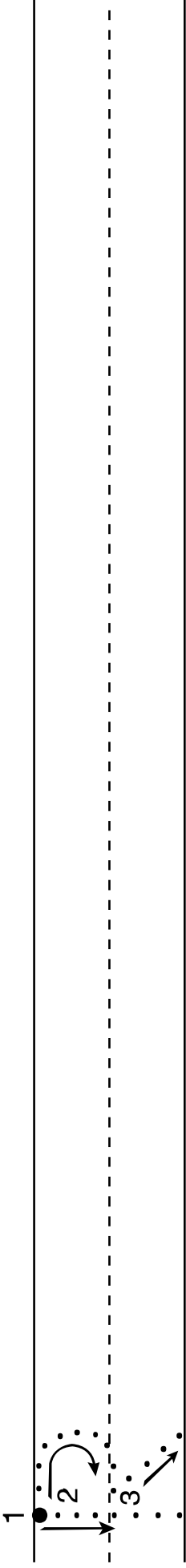
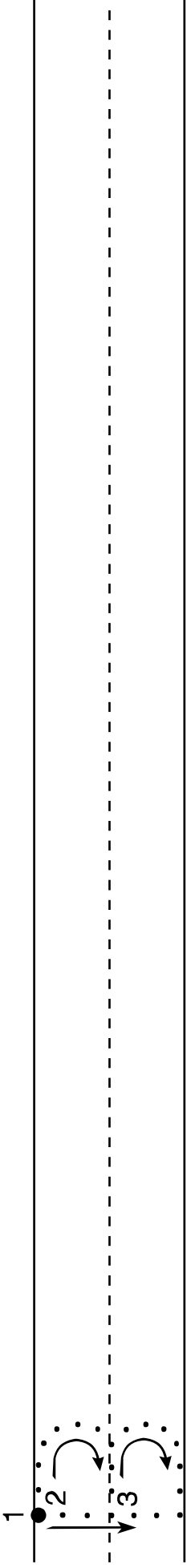
Student Name: \_\_\_\_\_

# K Week 7



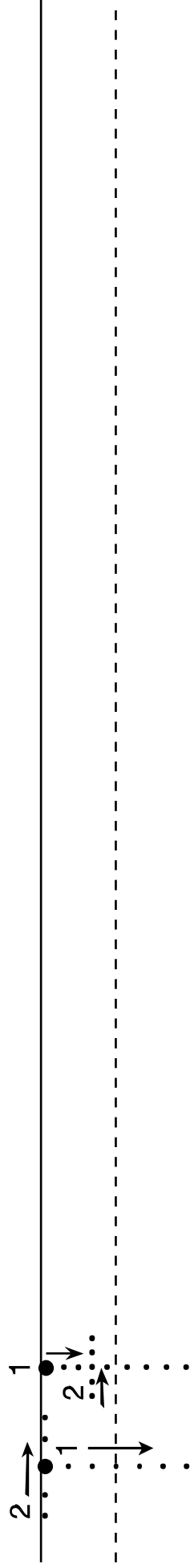
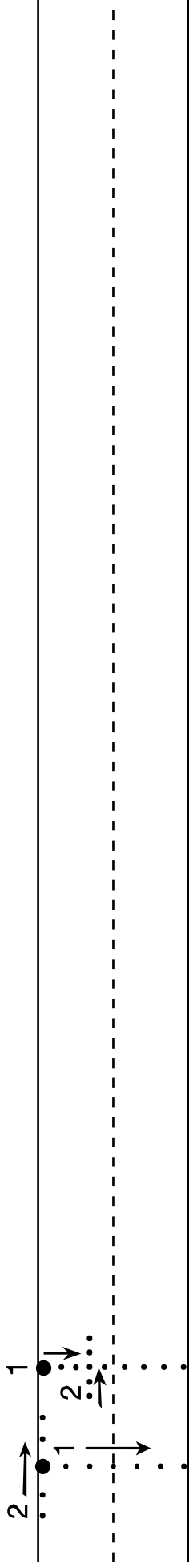
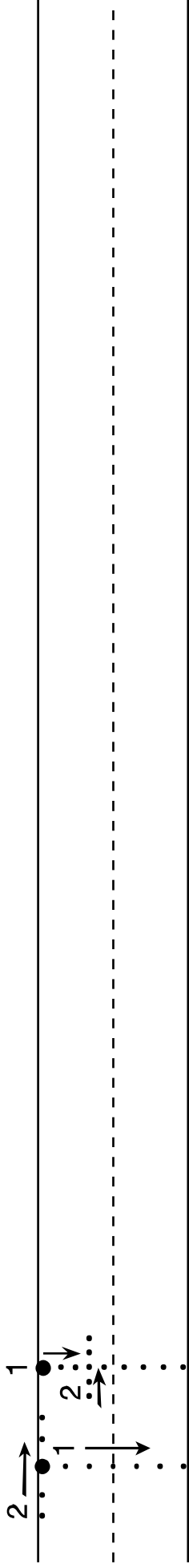
Student Name: \_\_\_\_\_

# K Week 7



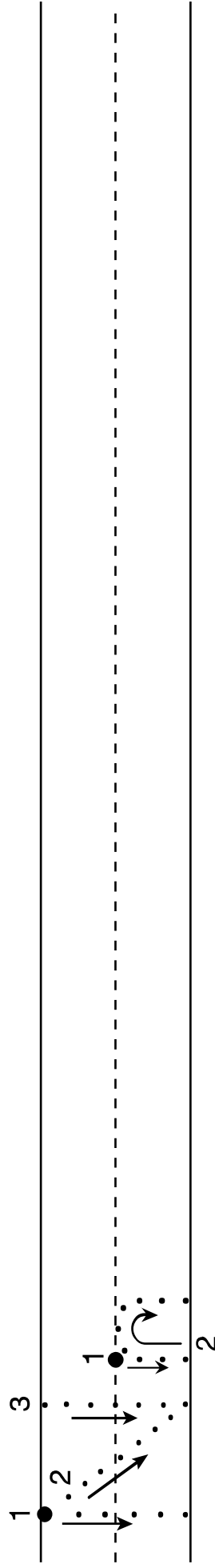
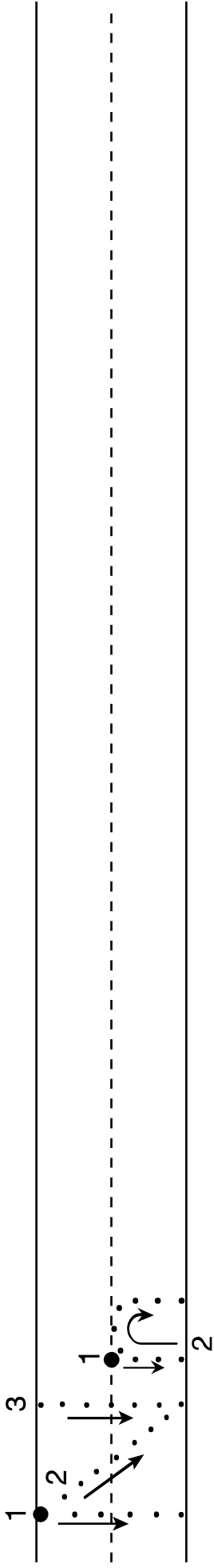
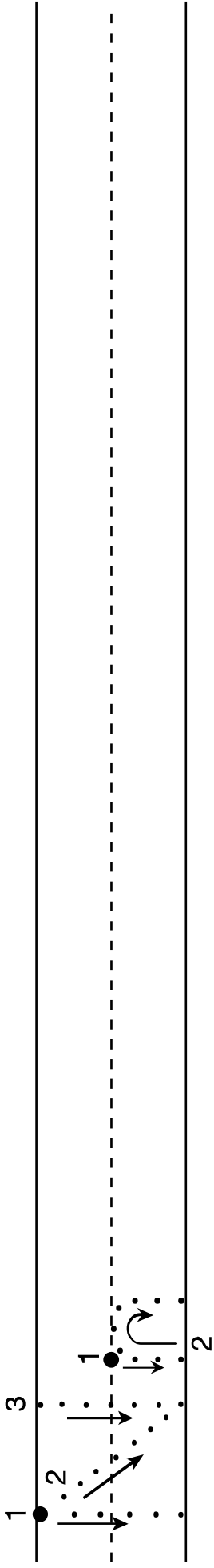
Student Name: \_\_\_\_\_

# K Week 8



Student Name: \_\_\_\_\_

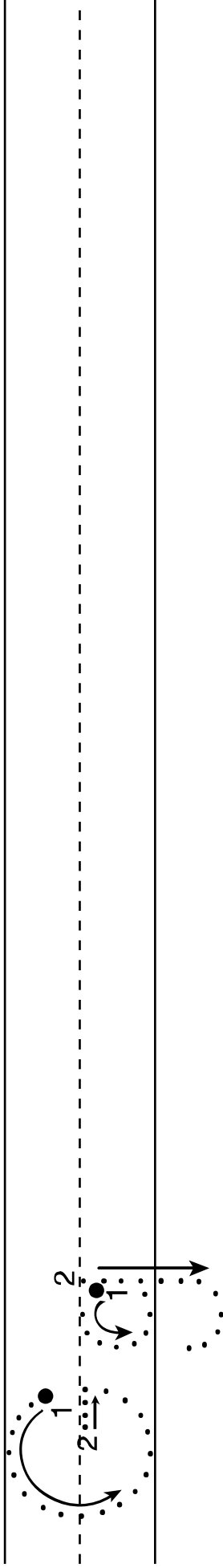
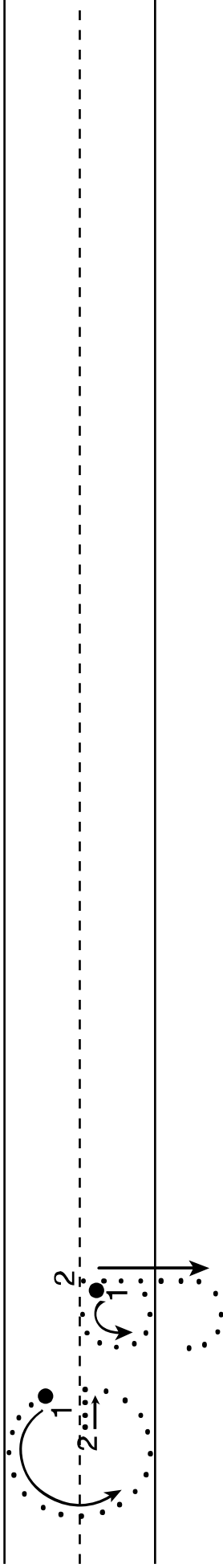
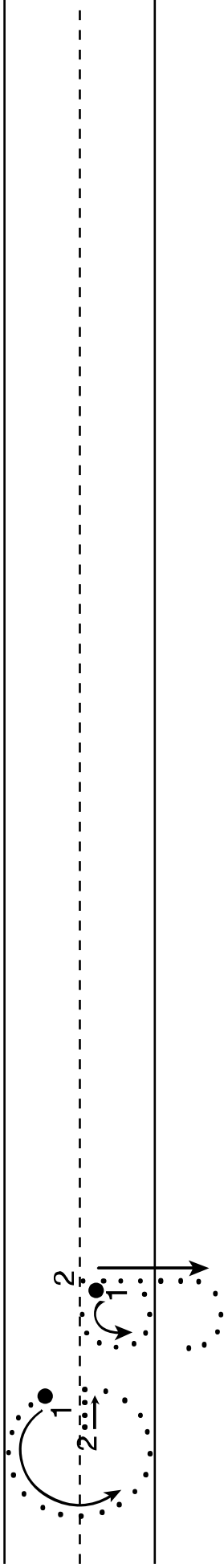
# K Week 8





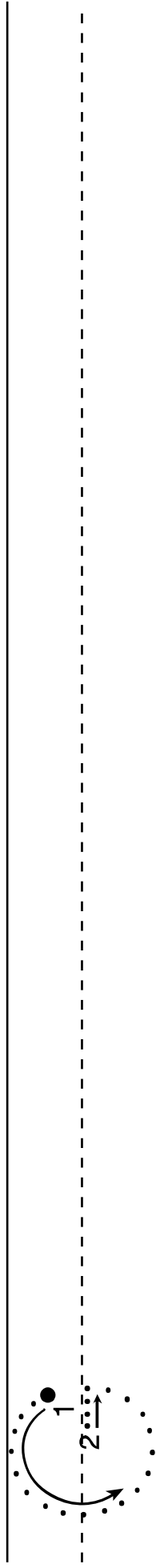
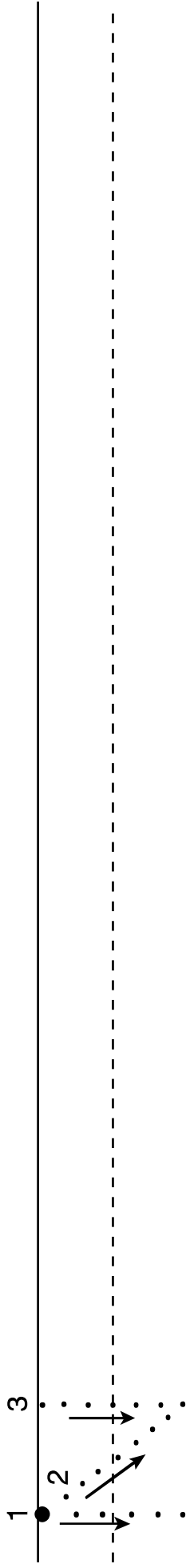
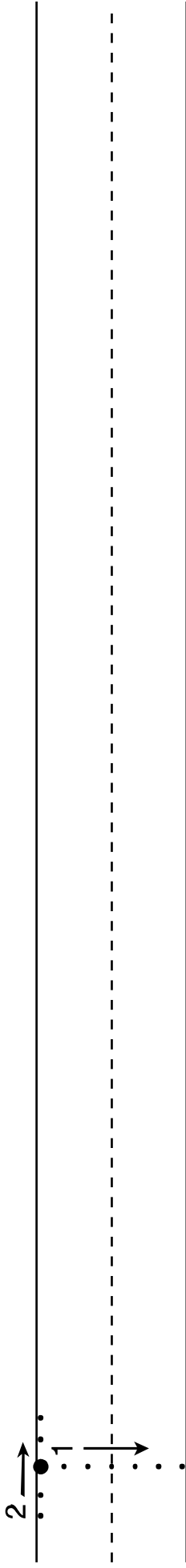
Student Name: \_\_\_\_\_

# K Week 8



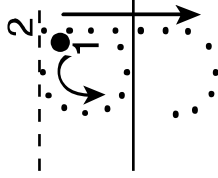
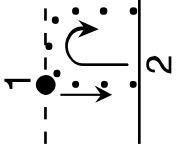
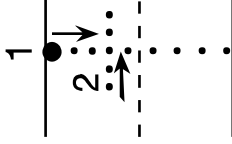
Student Name: \_\_\_\_\_

# K Week 8



Student Name: \_\_\_\_\_

# K Week 8



Student Name: \_\_\_\_\_

# K Week 9

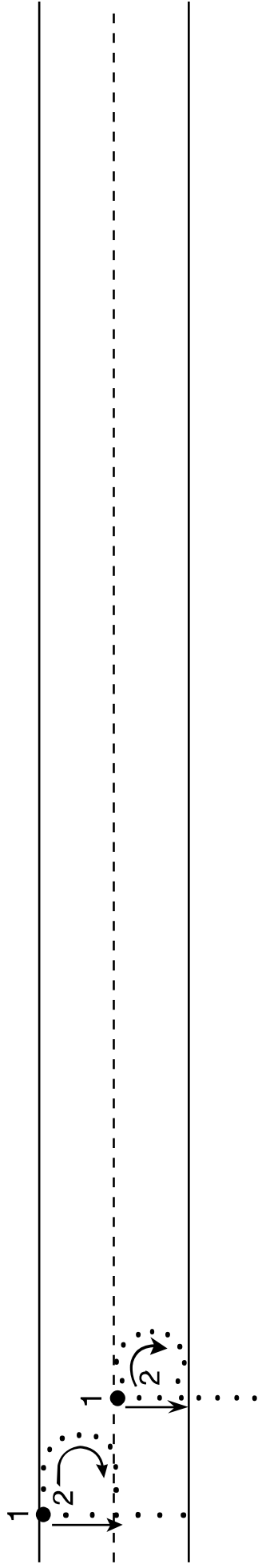
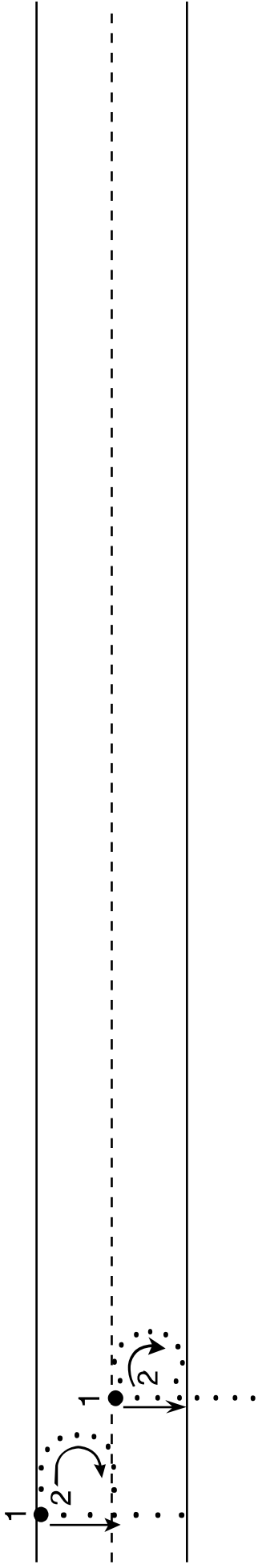
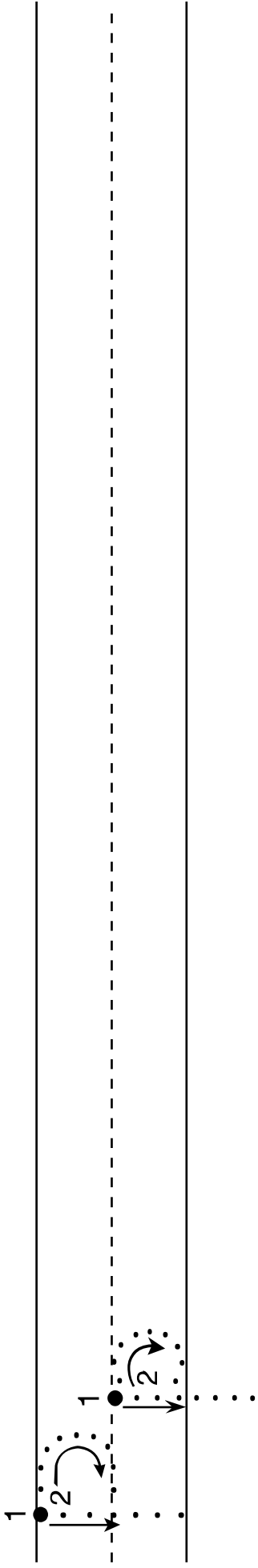
Handwriting practice row 1. It features three sets of handwriting lines: a solid top line, a dashed middle line, and a solid bottom line. Each set includes a letter 'k' with numbered arrows (1, 2, 3) indicating the stroke order: a vertical line down from the top line to the bottom line, a diagonal line from the middle dashed line to the bottom line, and a horizontal line across the bottom line.

Handwriting practice row 2. It features three sets of handwriting lines: a solid top line, a dashed middle line, and a solid bottom line. Each set includes a letter 'k' with numbered arrows (1, 2, 3) indicating the stroke order: a vertical line down from the top line to the bottom line, a diagonal line from the middle dashed line to the bottom line, and a horizontal line across the bottom line.

Handwriting practice row 3. It features three sets of handwriting lines: a solid top line, a dashed middle line, and a solid bottom line. Each set includes a letter 'k' with numbered arrows (1, 2, 3) indicating the stroke order: a vertical line down from the top line to the bottom line, a diagonal line from the middle dashed line to the bottom line, and a horizontal line across the bottom line.

Student Name: \_\_\_\_\_

# K Week 9



Student Name: \_\_\_\_\_

# K Week 9

Handwriting practice for uppercase letter K. The first row shows a solid 'K' with stroke order arrows: 1 (vertical down), 2 (horizontal right), and 3 (diagonal down-right). The second row shows a dashed 'K' for tracing. The third row is a blank line for independent practice.

Handwriting practice for lowercase letter k. The first row shows a solid 'k' with stroke order arrows: 1 (vertical down), 2 (curved down-right), and 3 (vertical down). The second row shows a dashed 'k' for tracing. The third row is a blank line for independent practice.

Handwriting practice for uppercase letter K. The first row shows a solid 'K' with stroke order arrows: 1 (vertical down), 2 (diagonal down-right), and 3 (horizontal right). The second row shows a dashed 'K' for tracing. The third row is a blank line for independent practice.

Student Name: \_\_\_\_\_

# K Week 9

A set of three horizontal lines: a solid top line, a dashed middle line, and a solid bottom line. A lowercase letter 'k' is positioned at the beginning of the lines. The letter has a solid dot at the top of the stem, with a '1' and a downward arrow indicating the first stroke. A second dot is on the dashed middle line, with a '2' and a curved arrow indicating the second stroke. A third dot is on the bottom line, with a '3' and a rightward arrow indicating the third stroke.

A set of three horizontal lines: a solid top line, a dashed middle line, and a solid bottom line. A lowercase letter 'k' is positioned at the beginning of the lines. The letter has a solid dot at the top of the stem, with a '1' and a downward arrow indicating the first stroke. A second dot is on the dashed middle line, with a '2' and a curved arrow indicating the second stroke. A third dot is on the bottom line, with a '3' and a rightward arrow indicating the third stroke. Below the bottom line, there are three vertical dots.

A set of three horizontal lines: a solid top line, a dashed middle line, and a solid bottom line. A lowercase letter 'k' is positioned at the beginning of the lines. The letter has a solid dot at the top of the stem, with a '1' and a downward arrow indicating the first stroke. A second dot is on the dashed middle line, with a '2' and a curved arrow indicating the second stroke. A third dot is on the bottom line, with a '3' and a rightward arrow indicating the third stroke. Below the bottom line, there are three vertical dots.